





# Contents

## Nursery schools

Wangerooge washbasin . . . . .	4
Renee trough . . . . .	5
Renee-step trough . . . . .	5
Carousel (6 washing areas) . . . . .	6
Carousel (8 washing areas) . . . . .	6
Lanta washbasin . . . . .	7
Lanta-step washbasin. . . . .	7
Patricia wall mounted washbasin. . . . .	8

## Public sector

Artesa trough . . . . .	9
Artesa trough leg . . . . .	9
Helene trough . . . . .	10
INT-2B 3 washbasin . . . . .	11

## Wheelchair accessible bathroom

Handicape grand wall mounted washbasin . . . . .	12
Walk-in bathtub for the disabled . . . . .	13

## Shower trays

Letya . . . . .	14
Beta 2. . . . .	14
Beta 1 . . . . .	14
Galla. . . . .	14
Elbe-R. . . . .	15
Fosilia. . . . .	15
Elbe . . . . .	15

## Bathtubs

Valnea 1 . . . . .	16
Valnea 2 . . . . .	17
Valnea 3 . . . . .	17
Sanlife . . . . .	17
Florida . . . . .	17

## Apartment units

Rotatable washbasin . . . . .	18
Supporting framework . . . . .	18
Mounting set . . . . .	18

## Healthcare centres – maternity hospital

Baby bathtub/trough Julia. . . . .	19
Baby bathtub + changing table . . . . .	20

## Top-mount washbasins

Oriane top-mount washbasin . . . . .	21
Sydney top-mount washbasin . . . . .	22
Abella top-mount washbasin. . . . .	22
Blanche top-mount washbasin . . . . .	22
Sara top-mount washbasin . . . . .	23
Artur top-mount washbasin . . . . .	23
Elodie top-mount washbasin. . . . .	23

## Wall mounted washbasins

Bali wall mounted washbasin . . . . .	24
Lombok wall mounted washbasin . . . . .	25

## Washbasins with variable dimensions – Variant. . . . . 26

## Standard colour shades . . . . . 29

## Nursery schools



### Wangerooge washbasin

Dimensions [mm]

390 × 325 × 130



➔ For complete range see our website [www.mramorit.cz/en/product-range#Washbasins\\_with\\_customized\\_dimensions\\_VARIANT](http://www.mramorit.cz/en/product-range#Washbasins_with_customized_dimensions_VARIANT)

## Nursery schools



### Renee trough

#### Dimensions [mm]

800 × 450 × 150

1300 × 450 × 150



### Renee-step trough

#### Dimensions [mm]

1915 × 450 × 250



## Nursery schools



Carousel (6 washing areas)

Dimensions [mm]

Ø 1600

Carousel (8 washing areas)

Dimensions [mm]

Ø 1600



→ We recommend installation on a cast marble column (same material as the washbasin) or a masonry column made from Ytong etc.

## Nursery schools



Lanta washbasin

Dimensions [mm]

1100 × 450 × 180



Lanta-step washbasin

Dimensions [mm]

2080 × 466 × 330



## Nursery schools



Patricia wall mounted washbasin

Dimensions [mm]

570 × 450 × 150



## Public sector



### Artesa trough

Dimensions [mm]
1200 × 570 × 150
1300 × 570 × 150
1400 × 570 × 150
1800 × 570 × 150
1950 × 570 × 150
2100 × 570 × 150

### Artesa trough leg

Dimensions [mm]
445 × 128 × 675



## Public sector



Helene trough

Dimensions [mm]

1400 × 530 × 150



## Public sector



### INT-2B 3 washbasin

Dimensions [mm]

900 × 325 × 130



## Wheelchair accessible bathroom



### Handicape grand wall mounted washbasin

Dimensions [mm]

786 × 545 × 130



## Wheelchair accessible bathroom



### Walk-in bathtub for the disabled

Dimensions [mm]

1120 × 1250 × 700



## Shower trays

### Letya

Dimensions [mm]

1200 × 1200 × 30

(variable dimensions available)



→ Suitable also for the program for people with disabilities.

### Beta 1

Dimensions [mm]

900 × 900 × 30



### Beta 2

Dimensions [mm]

900 × 900 × 30



### Galla

Dimensions [mm]

890 × 890 × 85



# Shower trays

## Elbe-R

Dimensions [mm]

900 × 900 × 30



## Elbe

Dimensions [mm]

900 × 900 × 30



## Fosilia

Dimensions [mm]

1800 × 1000 × 35

(variable dimensions available)



## Bathtubs



### Valnea 1

Dimensions [mm]

1795 × 875 × 505



## Bathtubs

### Valnea 2

Dimensions [mm]
1860 × 890 × 625



### Valnea 3

Dimensions [mm]
1700 × 750 × 620



### Sanlife

Dimensions [mm]
1800 × 770 × 655



### Florida

Dimensions [mm]
1500 × 1500 × 540



## Apartment units

### Rotatable washbasin

Dimensions [mm]
590 × 580 × 150



Mounting set



Supporting framework



## Healthcare centres – maternity hospital



Baby bathtub/trough Julia

Dimensions [mm]

1000 × 550 × 205



## Healthcare centres – maternity hospital



### Baby bathtub + changing table

baby bathtub Babywanne

#### Dimensions [mm]

bathtub – 790 × 413 × 275

changing table – made to order



baby bathtub Babywanne + changing table

baby bathtub Kinder 1, Kinder 2, Kinder 3

#### Dimensions [mm]

bathtub – 730 × 400 × 270 (Kinder 1)

bathtub – 580 × 400 × 130 (Kinder 2)

bathtub – 728 × 400 × 258 (Kinder 3)

changing table – made to order



baby bathtub Kinder1 (Kinder 2) + 2x changing table

## Top-mount washbasins



Oriane top-mount washbasin

Dimensions [mm]

595 × 455 × 150



## Top-mount washbasins



Abella top-mount washbasin

Dimensions [mm]

635 × 400 × 170

Sydney top-mount washbasin

Dimensions [mm]

545 × 345 × 134



Blanche top-mount washbasin

Dimensions [mm]

500 × 430 × 160



## Top-mount washbasins

### Sara top-mount washbasin

Dimensions [mm]

580 × 420 × 120



### Elodie top-mount washbasin

Dimensions [mm]

Ø465



### Artur top-mount washbasin

Dimensions [mm]

510 × 370 × 130



## Wall mounted washbasins



### Bali wall mounted washbasin

Dimensions [mm]

650 × 550 × 136



## Wall mounted washbasins



### Lombok wall mounted washbasin

Dimensions [mm]

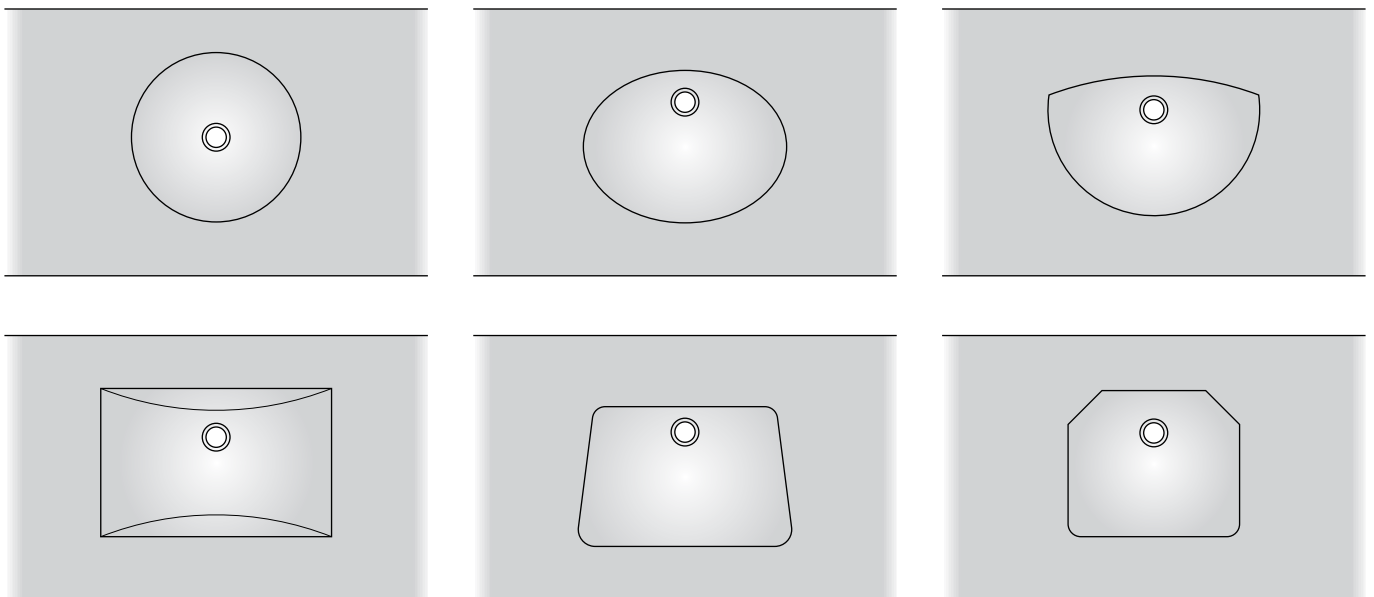
650 × 550 × 130



## Washbasins with variable dimensions – Variant



Some washing area design options



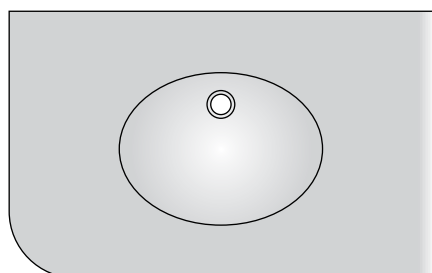
➔ For complete range see our website [www.mramorit.cz/en/product-range#Washbasins\\_with\\_customized\\_dimensions\\_VARIANT](http://www.mramorit.cz/en/product-range#Washbasins_with_customized_dimensions_VARIANT)

Create CUSTOM WASHBASIN using the configurator on our website [www.mramorit.cz/en](http://www.mramorit.cz/en)

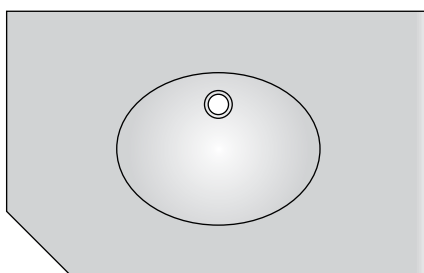


## Washbasins with variable dimensions – Variant

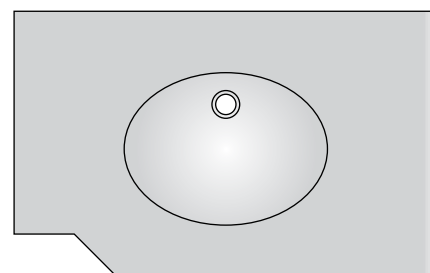
### Front edge types



radius

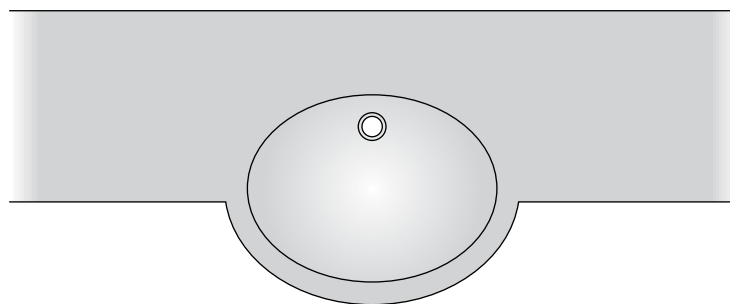


beveled corner

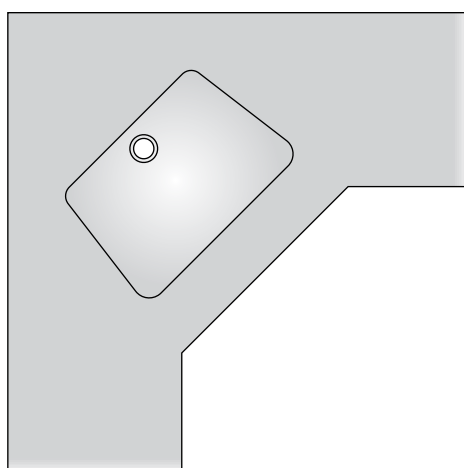


beveled inside corner

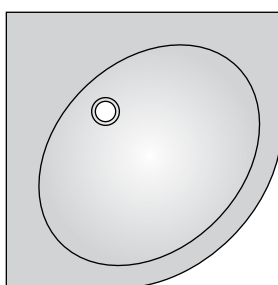
### Possibilities to place the wasbasin on the counter



washbasin with custom dimensions semi-recessed



corner washbasin with side areas – custom dimensions



corner washbasin with custom dimensions

Create CUSTOM WASHBASIN using the configurator on our website [www.mramorit.cz/en](http://www.mramorit.cz/en)



## Washbasins with variable dimensions – Variant

### Material – cast marble

The base ingredient in the production of cast marble is **limestone**. Other materials serve as binder or constitute part of the surface layer. Depending on customer's requirements, special fillers that create structures and colours of marble, granite, onyx, or the so called UNI-colours, i.e. unicolour surface.

### Technical data

The **VARIANT variable system** allows to create custom single piece wastops with integrated washbasins with the **length of up to 3,900 mm**. In case of washbasins longer than 3,900 mm, it is possible to create invisible joints at the assembly site. Wash spots can be placed almost anywhere in the wastop. We offer a large number of shapes.

#### OVERFLOW

Overflow is addressed using a drilled overflow or by using the GEBERIT CLOU waste system. It is also possible to use a constant flow valve..

#### REAR FACE

Should the rear face of the wastop be a single piece together with the wastop, the depth of the washbasin cannot be bigger than 630 mm. The height of the rear face in such cases is selectable – 30 mm, 50 mm, 80 mm, and 100 mm. We also offer the size of 3 mm and 10 mm..

#### FRONT FACE

If the wastop is equipped with a front face, the front face is glued on and is manufactured in **heights from 60 to 190 mm**, depending on the depth of the wash spot.. The front face of the wastop can be **ended by a right-angle side ending, inner or outer bevelling, or arch ending**. The glued joint is invisible.

The standard variant is produced with a **hole for a pillar mixer**. Wastops with dimensions other than those listed in the datasheets need to be consulted with the manufacturer from the technical standpoint.

**The minimum spacing between washbasins according to the standard is 700 mm**. Smaller spacings also possible at customer's request.

#### NEXT OPTIONS

It is also possible to add **soap dispenser holes, holes to throw paper towel into, towel hanging holes in the face or build a paper towel dispensers** into the front face.



### Installation of atypical slab washbasins

The building has to be finished construction-wise and **the washbasin installation should be one of the last steps** (the washbasins can be damaged by other crafts).

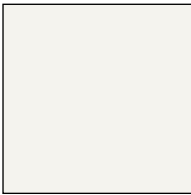
**Spirit-leveled brackets** are installed and the slab washbasin is laid on this flat surface. The washbasin cannot be removed from the original packaging until it is placed on the brackets. The washbasin can be damaged if placed improperly.

Create **CUSTOM WASHBASIN** using the configurator on our website [www.mramorit.cz/en](http://www.mramorit.cz/en)

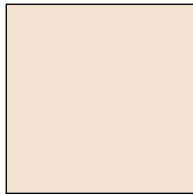


## Standard colour shades

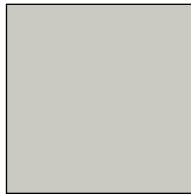
### UNI GLANZ



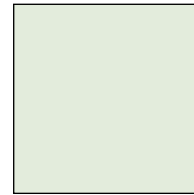
**ALPINWEISS**  
(basic colour shade)



**PERGAMON**  
VS 1312, (M91)

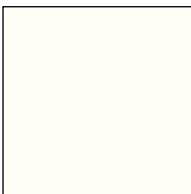


**MANHATTAN**  
RAL 7047, (M97)

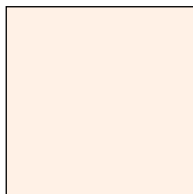


**ÄGÄIS**  
VS 6264, (M194)

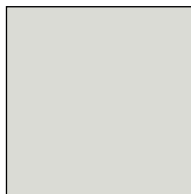
### UNI MATT



**ALPINWEISS**  
(basic color shade)



**PERGAMON**



**MANHATTAN**

### GRANIT GLANZ



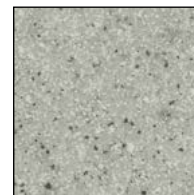
**WEISS**  
MGA 1512 (M175)



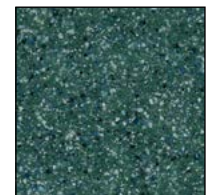
**BEIGE**  
GE 120, (M172)



**ÄGÄIS**  
SB 0077, (M174)



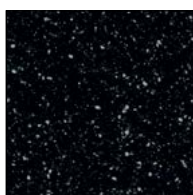
**GRAU**  
DGESB 104, (M173)



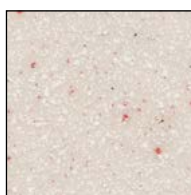
**GRÜN**  
DGESB 111, (M176)



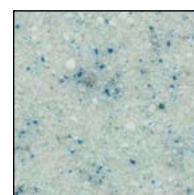
**BLAU**  
GE 152, (M171)



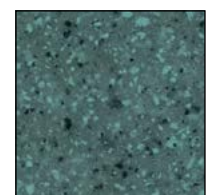
**SCHWARZ**  
DXSB 1170, (M170)



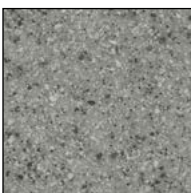
**GOSSAMER**  
GE 160



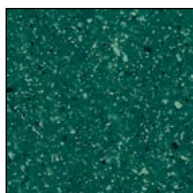
**OCEAN BREEZE**  
SGA 715



**BAVARIA**  
GE 270



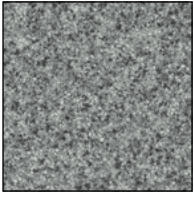
**STEEL GRAY**  
GE 140



**SEA GREEN**  
GE 172

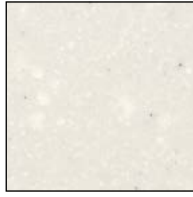
## Standard colour shades

### GRANIT MATT



**STEEL GRAY**  
PS 150

RECOMMENDED SHADE



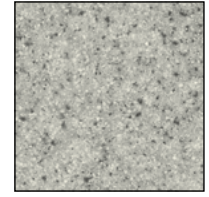
**WEISS**  
MGA 1512, (H840)



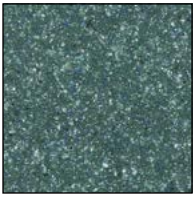
**BEIGE**  
PSS 301, (H860)



**ÄGÄIS**  
SB 0077, (H862)



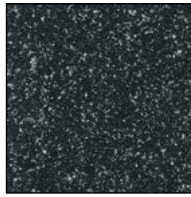
**GRAU**  
PSS 310, (H830)



**GRÜN**  
PSC 409, (D850)



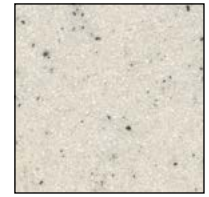
**BLAU**  
SB 0076, (D871)



**SCHWARZ**  
PS 200, (D820)



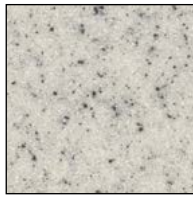
**TERRACOTTA**  
PSS 307



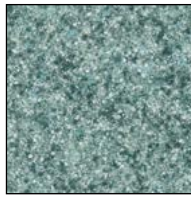
**SNOW**  
PS 130



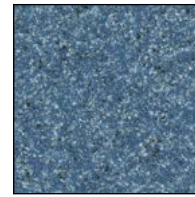
**GOSSAMER**  
PSS 311



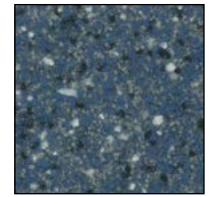
**DUSK**  
PSC 405



**PINE**  
PS 090



**OCEAN**  
PS 170



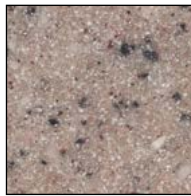
**MEDITERRANEAN**  
PSLC 482



**ECLIPSE**  
PS 140



**BIRCH**  
S 4045

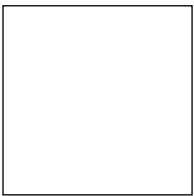


**ROSETTA**  
PSLC 485



**MONT BLANC**  
DCLC 465

### SOLID SURFACE



**WEISS**



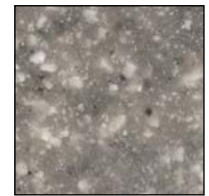
**ISLAND**  
MGA 1512



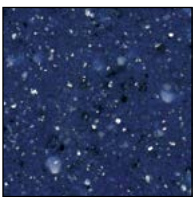
**GOLDEN TORTILLA**  
LXS 370



**STORM CLOUDS**  
LXS 230



**WINTER**  
MGA 0303



**NIGHT SKY**  
MGA 1902



**STONE**  
MGA 0203





**MRAMORIT, a. s.**

Káranice 72, 503 66 Káranice, Czech Republic

Phone: +420 495 499 103

E-mail: [export@mramorit.cz](mailto:export@mramorit.cz)

[www.mramorit.cz/en](http://www.mramorit.cz/en)